

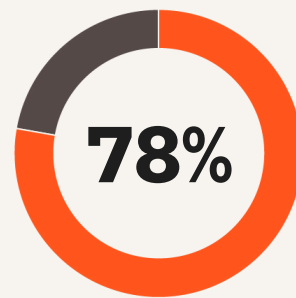
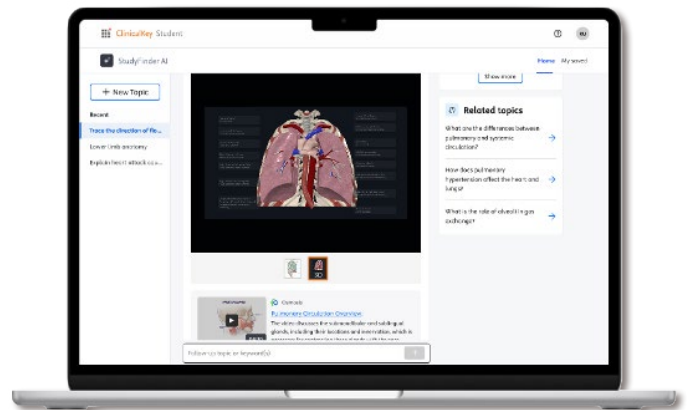
Simplify content discovery with StudyFinder AI

An AI-powered enhancement
to ClinicalKey Student



StudyFinder AI helps cut through information overload and promote responsible AI use by connecting students to trusted, curriculum-aligned resources that adapt to diverse learning needs and enhance the medical education experience.

- **Advanced search capabilities** reduce time spent resource hunting and promote personalized learning
- **Engaging multimodal content** — including evidence-based textbooks, 3D anatomy models, videos, and clinical cases — supports clinical thinking
- **Embedded citations linked to verified sources** help ensure students are accessing accurate information that's relevant to their academic goals



of students use AI tools to answer questions, quickly synthesize information, and practice exam questions and clinical skills.

— Elsevier research, 2024



ELSEVIER

Advancing human progress together

Leverage a rich digital content library

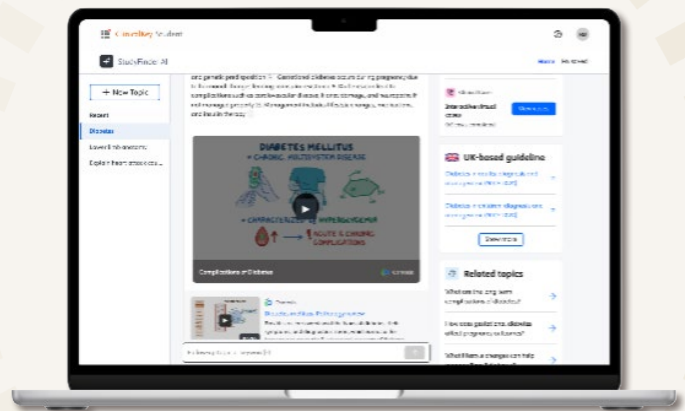
Unlike generic AI tools that often give decontextualized or unverified answers, StudyFinder AI delivers evidence-based answers and information drawn from the wealth of engaging, curriculum-aligned resources available in ClinicalKey Student, including:

- Evidence-based textbooks
- Multiple-choice questions with instant feedback
- Bite-sized videos and high-yield notes
- Pre-built and adjustable 3D anatomy models



StudyFinder AI's advanced technology supports your teaching goals

- **Curriculum alignment and governance** keeps students on the right track with learning resources linked to course objectives and assessment topics
- **Streamlined access** to trusted materials, assessments, and curriculum tools saves you time and makes teaching more efficient
- **Inclusive learning approach** provides engaging and accessible content that gives students the flexibility to learn at their own pace and in their preferred learning style
- **AI-powered content discovery** uses Retrieval-Augmented Generation (RAG) technology to deliver concise, domain-specific information for medical education



Scan the code or visit

<https://www.elsevier.com/en-au/products/clinicalkey/students-and-faculty/studyfinder-ai>

