

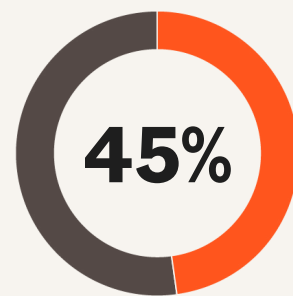
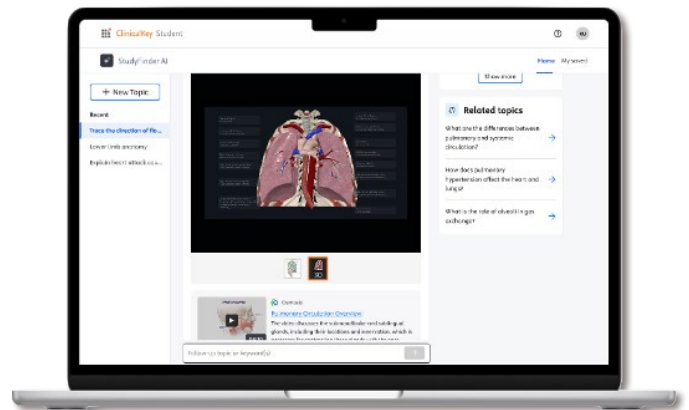
Simplify content discovery with StudyFinder AI

An AI-powered enhancement
to ClinicalKey Student



StudyFinder AI helps cut through information overload and promote responsible AI use by connecting students to trusted, curriculum-aligned resources. Our unified medical education platform streamlines your digital ecosystem and ensures equitable access for every student.

- **Advanced search capabilities** boost resource discoverability and highlight underutilized materials to maximize the value of your library's investment
- **Engaging multimodal content** — including evidence-based textbooks, 3D anatomy models, videos, and clinical cases — supports diverse learning needs
- **Embedded citations** linked to verified sources help ensure students access accurate, reliable information from a standardized digital collection



of medical students currently use AI tools to quickly synthesize information.

— Elsevier research, 2024



ELSEVIER

Advancing human progress together

Leverage a rich digital content library

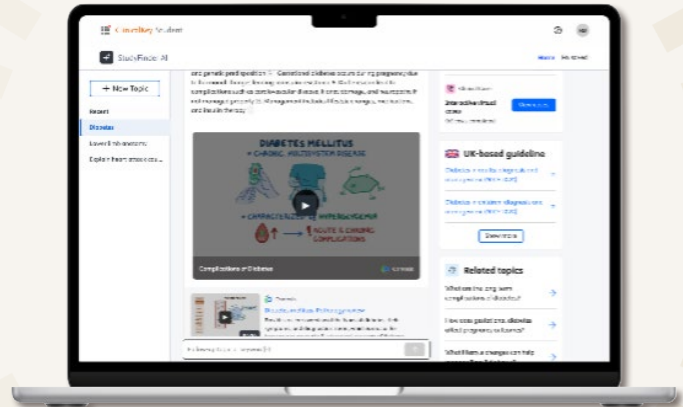
Unlike generic AI tools that often give decontextualized or unverified answers, StudyFinder AI delivers evidence-based answers and information drawn from the wealth of engaging, curriculum-aligned resources available in ClinicalKey Student, including:

- Evidence-based textbooks
- Multiple-choice questions with instant feedback
- Bite-sized videos and high-yield notes
- Pre-built and adjustable 3D anatomy models



StudyFinder AI supports strategic digital resource management for your library

- **Unified platform** streamlines content, assessment, and curriculum support, helping to increase cost-effectiveness and reduce technical support tickets
- **Insights and reporting** from usage dashboards offer data to justify investments and monitor resource alignment with curriculum demands
- **Content management capabilities** empower you to maintain the quality, curation, and standardization of your digital collection
- **Faculty support** helps your instructors identify knowledge gaps and foster innovative digital learning environments



Scan the code or visit

<https://www.elsevier.com/en-au/products/clinicalkey/students-and-faculty/studyfinder-ai>

